

Win-Win! Ampleye Saves Chair Time For Practitioner and Improves Quality of Vision For Patient

by **Lindsey Cronkright, NCLE-AC**
Fitting Consultant

JC is a 70 year old patient with bilateral Pellucid Marginal Degeneration. After years of wearing corneal GP lenses, he has found success with a scleral lens for both comfort and acuity.

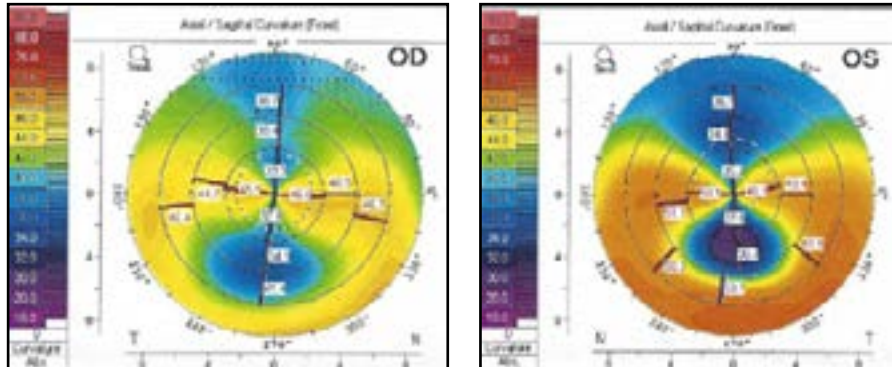


Figure 1

The patient presented with stability issues with their bitoric corneal GP lenses. Based on the irregular cornea seen in the topography provided (Fig 1), an aspheric back surface design was suggested. The Art Custom Eccentric (ACE) design was chosen for the adjustable back surface eccentricity, optical zone and edge lift control. The ACE design is a versatile lens that can aide in fitting early keratoconus, PMD, irregularities due to corneal surgery or infection and mild to moderate regular WTR & ATR astigmatism.

The initial lenses demonstrated bearing superiorly and inferiorly (Fig 2) which is extremely common when fitting PMD patients in corneal GP lenses.

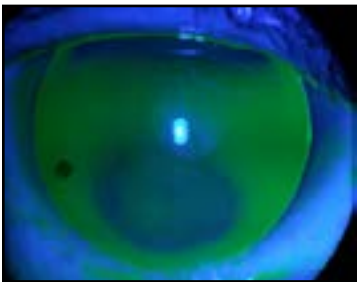


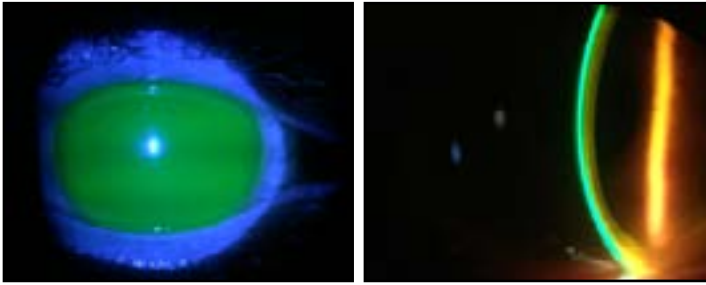
Figure 2

With continued adjustments, it may be possible to achieve a successful fit with a corneal GP. However, the above fluorescein image indicates a significant elevation difference within the cornea and will likely require several refits to obtain an acceptable end point. Since this practitioner has the Ampleye Scleral diagnostic set, we suggested a scleral lens as the next option. Based on the fitting guide, the 4400 and 4800 SAGs were trial fit and resulted in 350-400um of vault over the area of highest elevation (Fig 3). This is ideal for a pre-settling amount. The vault continued to be appropriate through the peripheral cornea and limbal lift zones. There was no blanching that needed to be addressed on either eye. An over-refraction was performed and the following lenses were ordered:

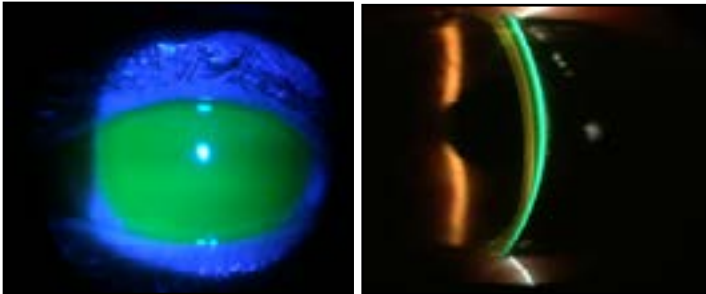
OD 4400 SAG/8.04 BC/16.50 Diam/-1.50 Power (20/25+)

OS 4800 SAG/8.04 BC/16.50 Diam/-1.25 Power (20/25)

Figure 3



OD



OS

This fitting was finalized in one visit and the patient is experiencing great comfort and acuity from their Ampleye lenses.

View the [Ampleye Scleral Quick Fit Demo Video](#)

Explore our [Ampleye Resource Library](#)



www.artoptical.com | 800.253.9364

©2026 Art Optical Contact Lens, Inc. – all rights reserved.